

COMMERCIAL



S E R I E S

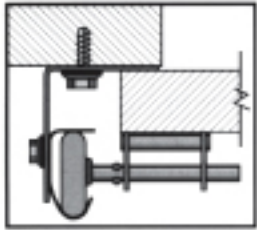


S-24
SN-24

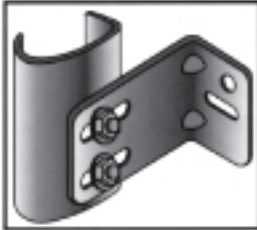


Mid-America Door Company

STANDARDS



REVERSE ANGLE: Door overlaps jamb approximately 1" against continuous angle of track support system (angle foot toward door). May be used with wood or steel jambs. The door closes against the base flange of the continuous angle.



BRACKET MOUNTED TRACK: Use with wood or steel jambs. Door closes against stop molding.

GENERAL: Doors will be Series SN-24 or S-24 as manufactured by Mid-America Door Company.

RELATED WORK: Opening preparation, miscellaneous or structural metal work, access panels, finish or field painting, are in the Scope of Work of other trades.

DOOR SECTIONS: Sections will be 25 gauge (SN-24 Series) or 24 gauge (S-24 Series) steel and have a nominal 2" thickness. Sections will have a tongue and groove meeting rail to provide a weather tight seal between sections. Center and end stiles will be 18 gauge steel formed, fastened, and bonded as integral structures of the section.

TRACK: Galvanized track systems shall be 2" or 3" depending upon door size and will be bracket or angle mounted depending upon application.

HARDWARE: Hinges and brackets to be made from galvanized steel. Each roller shall have ten 1/4" hardened steel balls per roller (2" S-24 Series), or adequate for design requirements.

SPRING COUNTERBALANCE: Springs shall be oil tempered, helical wound and stress relieved torsion type. Springs will be mounted on a continuous cross header steel shaft supported by bearing brackets. Long life springs of 25-50-100 thousand cycles may be specified and are recommended for high usage doors. Cables are 7 X 19 strand galvanized aircraft type with a minimum safety factor of 8 to 1.

FINISH: Paint will be baked-on polyester coating.

WEATHERSTRIP: Bottom rail of section to include U'd vinyl astragal held in place by retainer to provide additional reinforcement. Additional weatherstripping available for full width of header and jambs assisting in preventing air infiltration.

LOCK: Lock will be interior mounted slide lock. (Optional cylinder lock is available)

VISION SECTIONS: Full section glazing can be provided with mill finish aluminum frames and DSB glass to allow maximum light or vision, or 25 x 5 vinyl frames, or rubber grommet glazes with DSB glass.

INSULATION: Insulation may be specified for both the SN-24 and S-24 Series. Door sections shall be furnished with minimum 1 1/2" thick polystyrene insulation. Back covers shall be 26 gauge steel, or vinyl backed.

Paint exclusively by:



Authorized Dealer:

OPTIONAL ENERGY SAVING INSULATION



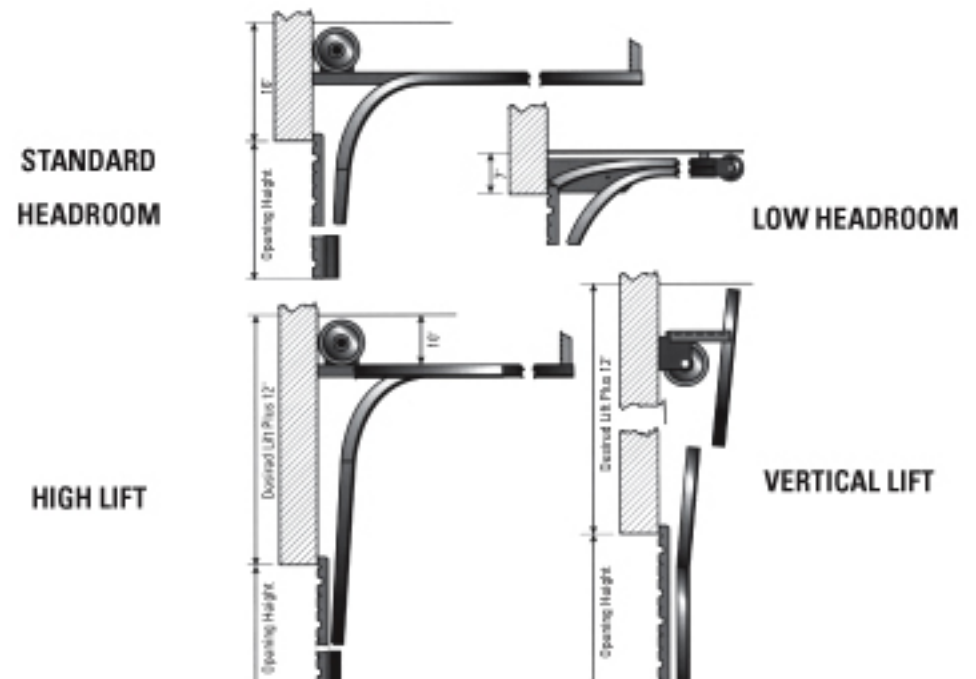
Steel Door Panel and Selection Schedule

Panels Wide		Sections High	
Width	No. of Panels	Height	No. of Sections
Thru 9'2"	2	Thru 8'0"	4
9'3" - 12'2"	3	8'3" - 10'0"	5
12'3" - 16'2"	4	10'3" - 12'0"	6
16'3" - 20'2"	5	12'3" - 14'0"	7
20'3" - 24'2"	6	14'3" - 16'0"	8

Clearance and Mounting Requirements

	Clear Headroom		Sideroom		Depth Into Room	Centerline of Springs	
	2" Track	3" Track	2" Track	3" Track		2" Track	3" Track
Standard Lift Manual 12"	12 1/2"	21"	4 1/2"	5 1/2"	Door Height + 18"	Door Height	Door Height
Standard Lift Motor Operated	19"	22 1/2"			Door Height + 66"	Door Height + 13 1/2"	Door Height + 15 1/2"
Standard Lift Manual 15"	16 1/2"	21"	4 1/2"	5 1/2"	Door Height + 18"	Door Height	Door Height
Standard Lift Motor Operated	19"	22 1/2"			Door Height + 66"	Door Height + 13 1/2"	Door Height + 15 1/2"
High Lift Manual	Highlift + 12" 4 1/2"		5 1/2"	Less Lift + 30"	Door Height	Door Height	Door Height
High Lift Motor Operated	Highlift + 12"		24" One Side		Door Height Less Lift + 30"	+ Lift + 6 1/2"	+ Lift + 7 1/2"
Vertical Lift Manual	Door Height + 8"		4 1/2"	5 1/2"	18"	Double Door Height + 2"	
Vertical Lift Motor Operated	Door Height + 8"		24" One Side		18"	Double Door Height + 2"	
Low Headroom Manual	6 1/2"	11"	6"	9"	Door Height + 30"	Does Not Apply	
Low Headroom Motor Operated	9"	13 1/2"			Door Height + 30"	Does Not Apply	

HEADROOM SELECTION



WE DELIVER!

Mid-America Door Company

1001 West Hartford • Ponca City, OK 74601

